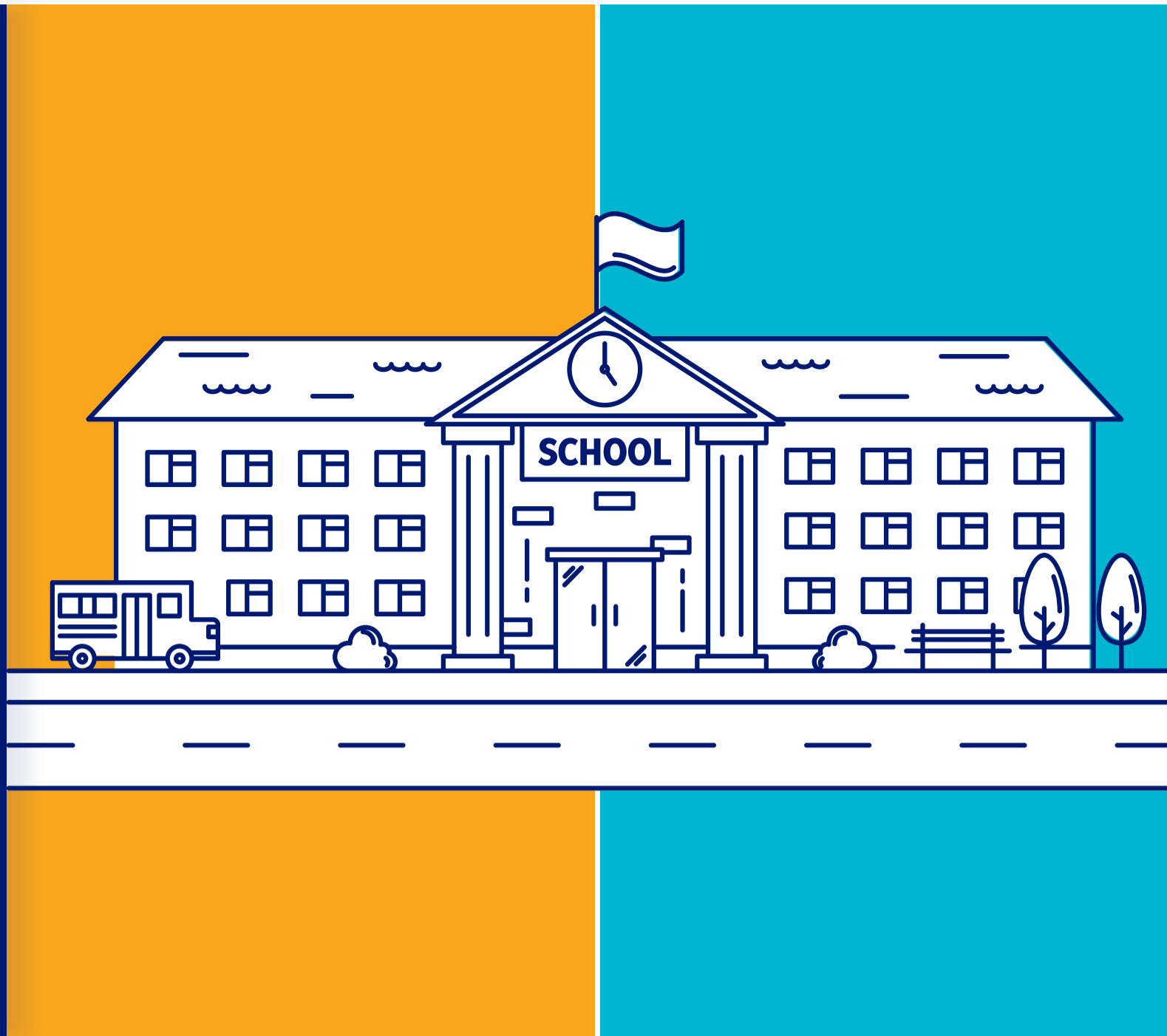


Students who attended schools reporting less student and teacher turnover performed better on Grade 8 math on the 2017 NAEP than students in schools with more turnover.



## Student Mobility and NAEP Scores

Lower turnover is associated with higher performance



Grade 8 Math	Students enrolling after the first day of school	Students scoring at or above NAEP Proficient
	1-3%	42%*
	11-20%	23%



These results cannot be used to infer cause-and-effect relationships between school characteristics and student achievement. Students in schools with low turnover (defined as 1-3% of students enrolling after first day of school), perform better on NAEP than students in high turnover schools (defined as 11-20% of students enrolling after the first day of school).

\*Significantly different ( $p < .05$ ) from the 11-20% category.

## Student Mobility and NAEP Scores

Lower turnover is associated with higher performance



Grade 8 Math	Students withdrawing before the school year ends	Students scoring at or above NAEP Proficient
	1-3%	40%*
	11-20%	22%



These results cannot be used to infer cause-and-effect relationships between school characteristics and student achievement. Students in schools with low turnover (defined as 1-3% of students withdrawing before the school year ends), perform better on NAEP than students in high turnover schools (defined as 11-20% of students withdrawing before the school year ends).

\*Significantly different ( $p < .05$ ) from the 11-20% category.

## Teacher Mobility and NAEP Scores

Lower turnover is associated with higher performance



Grade 8 Math	Teachers returning full-time next year	Students scoring at or above NAEP Proficient
	11-25%	19%*
	76-90%	32%



These results cannot be used to infer cause-and-effect relationships between school characteristics and student achievement. Students in schools with low teacher turnover (defined as 76-90% of teachers returning full-time from the previous school year), perform better on NAEP than students in schools with high teacher turnover (defined as 11-25% of teachers returning full-time from the previous school year).

\*Significantly different ( $p < .05$ ) from the 76-90% category.